

气动夹爪 G40.1 - Pneumatic gripper G40.1

主要特点:

- 铝制外壳
- 曲柄结构原理
- 铁质夹臂
- 3 个安装面 (前, 后和缸体 Ø46 mm 上)
- 气缸缸径: 40 mm
- 4 个 G1/8"气源接口
- P+F 电感式接近开关 (M12x1 接口)



Main characteristics:

- Aluminum flanks
- Toggle action mechanism
- Steel arms
- 3 mounting areas (front, back and on the cylinder Ø46 mm)
- Pneumatic cylinder bore: 40 mm
- 4 feeding ports G1/8"
- Inductive proximity switch P+F (connection M12x1)



[PDF](#)

[3D Step](#)

[Index](#)

索引.

Index.

页码 Page	描述 Description	
1	主要特点 Main characteristics	
2	订货举例 Ordering example	
3	尺寸页码 Dimensional page	G40.1-GV...
4		G40.1-GO...
5		G40.1-G1...
6		G40.1-G2...
7	图表 Diagrams	
8	电感式接近开关图表 / 气路图 Diagram for inductive proximity switch / Pneumatic plan	
9	备件 / Spare parts	
10	备注 / Notes	



订货举例. - Ordering example.

G40.1	-	G2	-	90	-	X	-	*B
-------	---	----	---	----	---	---	---	----

气爪类型和气缸缸径:
Gripper type and cylinder bore:

G40.1
气缸缸径 40 mm
cylinder bore 40mm



接近开关:
Proximity switch:

X: 无
without

I: 电感式
inductive



打开角度:
Opening angle:

15°	30°	45°	60°	75°	90°	105°
-----	-----	-----	-----	-----	-----	------

G1 型最大打开角度 = 90°
Max. opening angle for arms type G1 = 90°

锁紧销类型 (见第 9 页):
Type of lockpins (see page 9):

X: 不带锁紧销
without pin

A: 锁紧销带六角滚花头
pin with Hexagonal knurled head

B: 锁紧销带圆头
pin with rounded head

C: 锁紧销带活动头
pin with swinging knurled head

* 带*号表明只能用于夹臂 G1 和 G2
* indicate only for clamping arms type G1 and G2

夹臂类型 (见尺寸页码):
Type of arm (see dimensional pages):

XX: 无夹臂
without arm

GV: “V” 型中间夹臂 GVD = “V” 型右夹臂.
GVS = “V” 型左夹臂 (见第 3 页)
arm “V” central, GVD = arm “V” right,
GVS = arm “V” left (see page 3)

GO: “O” 型中间夹臂, GOD = “O” 型右夹臂.
GOS = “O”型左夹臂 (见第 4 页)
arm “O” central, GOD = arm “O” right,
GOS = arm “O” left (see page 4)

G1: “G”型夹臂带一个销子, 不带固定支架
(见第 5 页)
arm type “G” with 1 pin and without
fixed support (see page 5)

G1/1: “G” 型夹臂带一个销子, 带固定支架
(见第 5 页)
arm type “G” with 1 pin and with
fixed support (see page 5)

G2: “G” 型夹臂带两个销子, 不带固定支架
(见第 6 页)
arm type “G” with 2 pins and without
fixed support (see page 6)

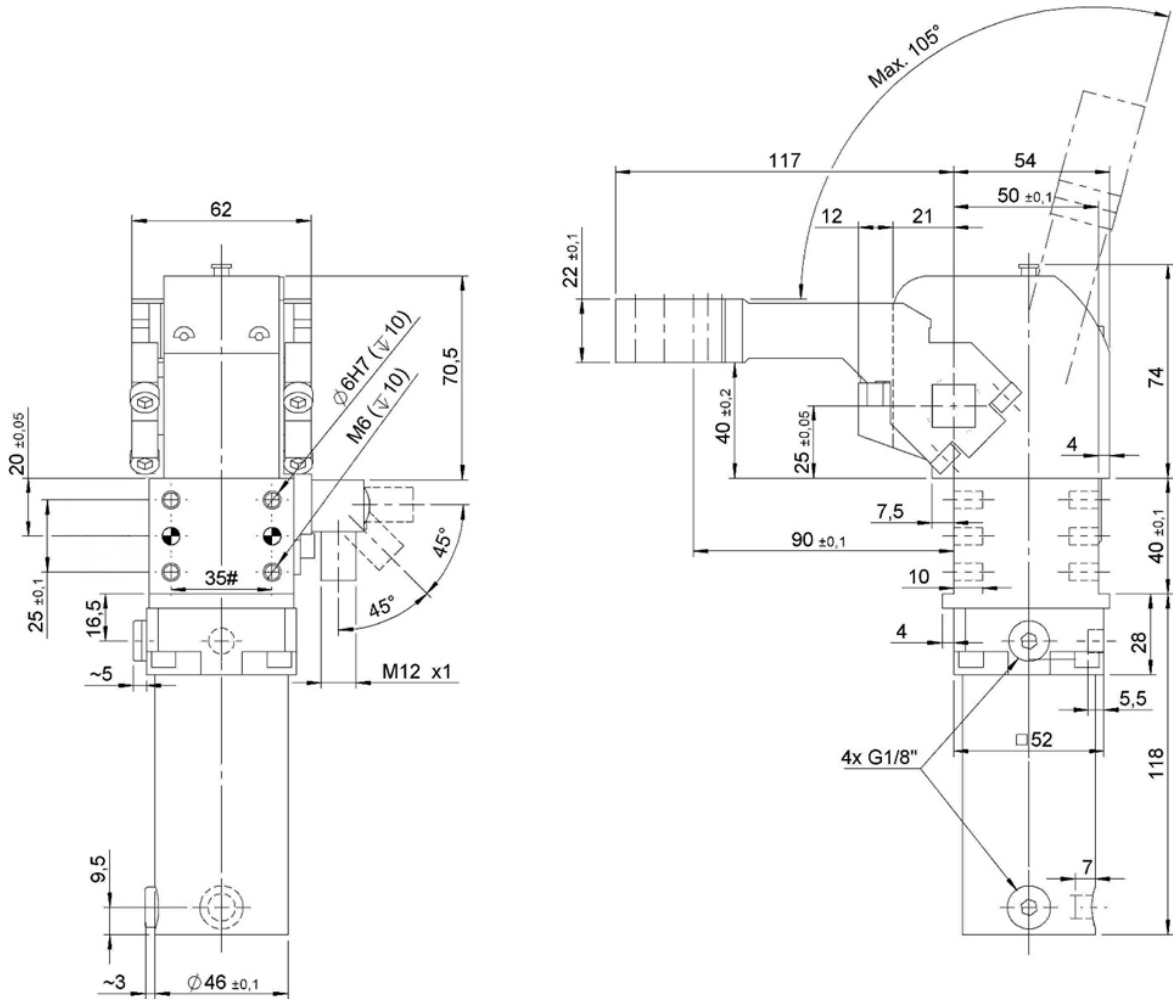
G2/2: “G” 型夹臂带两个销子, 带固定支架(见第 6 页)
arm type “G” with 2 pins and with
fixed support (see page 6)





G40.1-GV...

夹爪, D. 40, 垂直安装夹臂, 夹臂高度 15mm
 Gripper, D. 40, Vertical arm, Offset 15mm

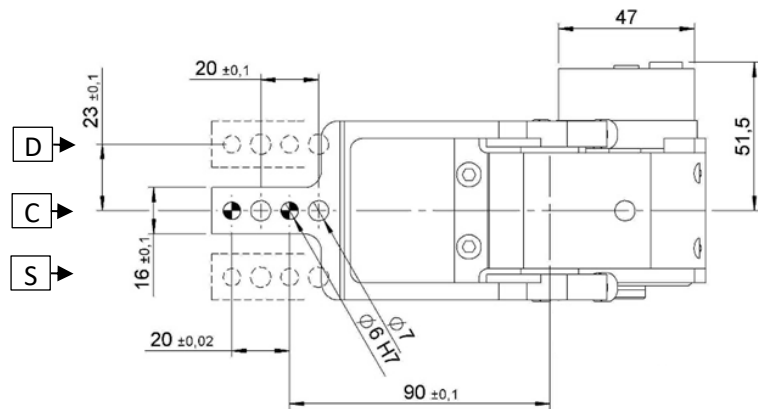


最大打开角度 = 105°.

Max. opening angle = 105°.

可以简单通过改变夹臂的安装方向把GV变成GO,反之亦然。

It's possible to transform the gripper type "GV" into a type "GO" one and vice-versa, simply changing the lever position.



#公差: 定位销孔 ±0.02, 螺纹孔 ±0.1

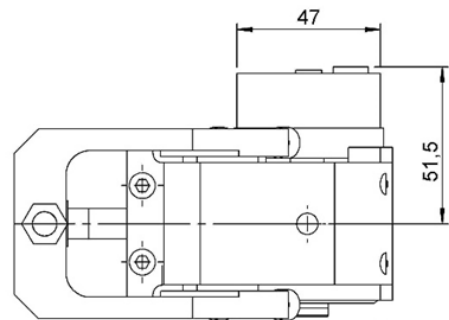
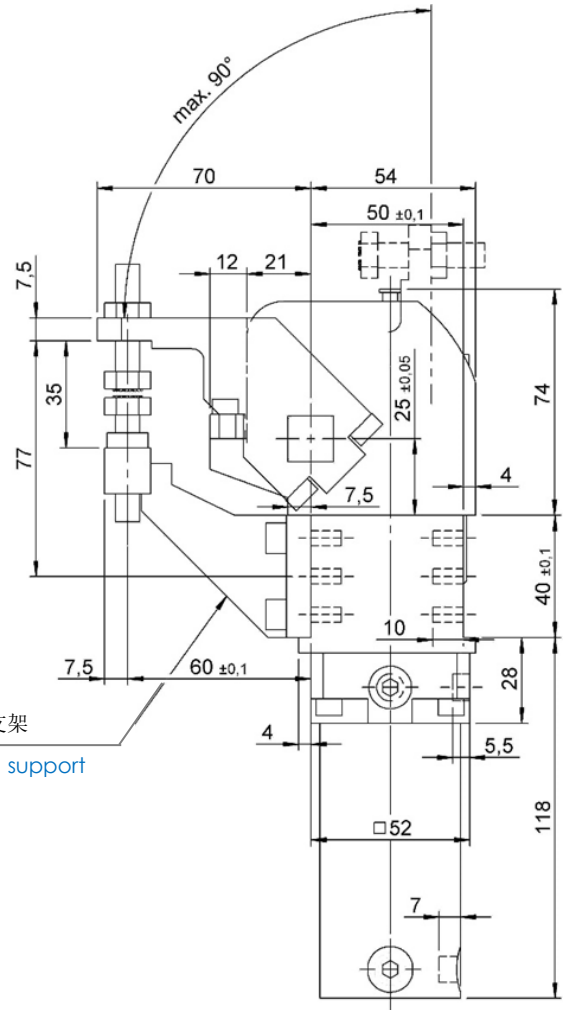
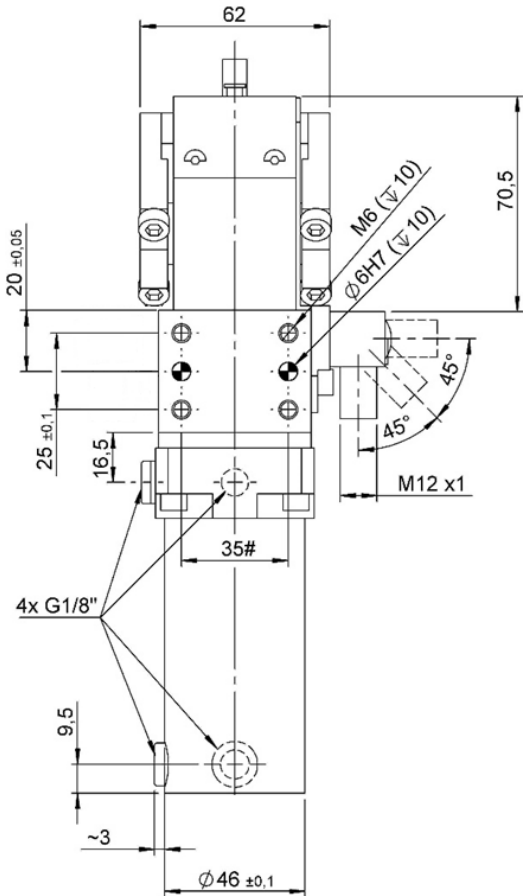
#Tolerances: dowel holes ±0.02, screw holes ±0.1

类型 Type	气缸缸径 Cylinder bore	保持力 Holding moment	重量 Weight	工作气压 Working pressure	最大夹紧力矩 (5 bar) Clamping max. torque (5 bar)	空气耗气量 (5 bar) Air consumption (5 bar)
	[mm]	[Nm]	[Kg]	[bar]	[Nm]	[l]
G40.1-GV...	40	200	~ 1,8	2 - 8	130	~ 0,7



G40.1-G1...

夹爪, D. 40, 夹爪夹臂, 1+1 销子, 固定支架
 Gripper, D. 40, gripper arm, 1+1 pin, fixed support



标准打开角度 = 90°.
 Standard opening angle = 90°.

G1 = 不带固定支架 G1/1 = 带固定支架
G1 = without fixed support G1/1 = with fixed support

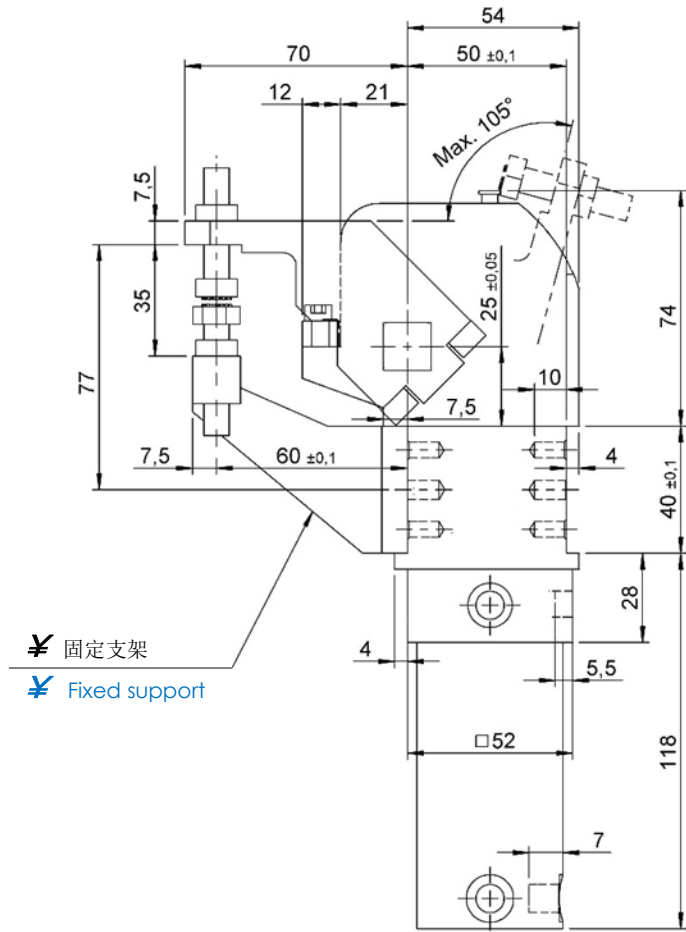
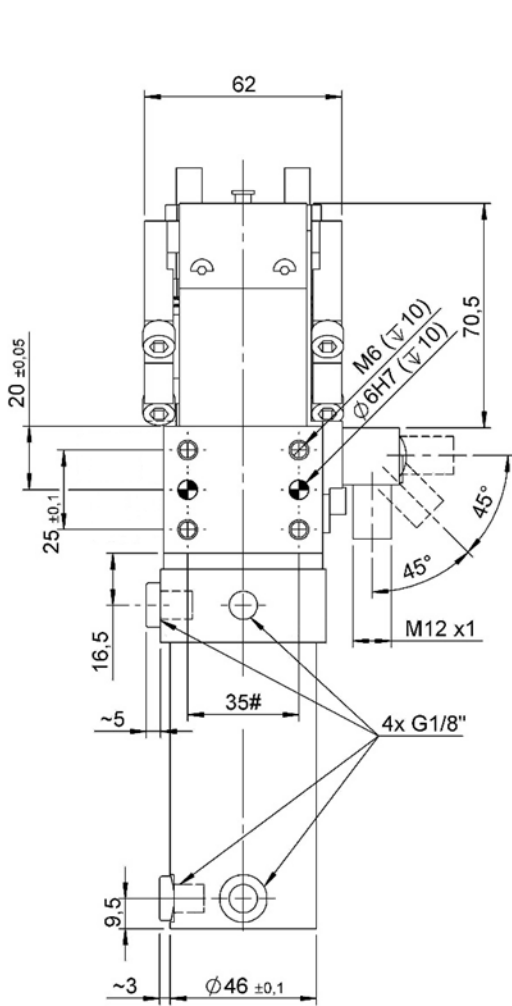
公差: 定位销孔 ±0.02, 螺纹孔 ±0.1
 #Tolerances: dowel holes ±0.02, screw holes ±0.1

类型 Type	气缸缸径 Cylinder bore	保持力 Holding moment	重量 Weight	工作气压 Working pressure	最大夹紧力矩 (5 bar) Clamping max. torque (5 bar)	空气耗气量 (5 bar) Air consumption (5 bar)
	[mm]	[Nm]	[Kg]	[bar]	[Nm]	[l]
G40.1-G1...	40	200	~ 1,8	2 - 8	130	~ 0,7



G40.1-G2...

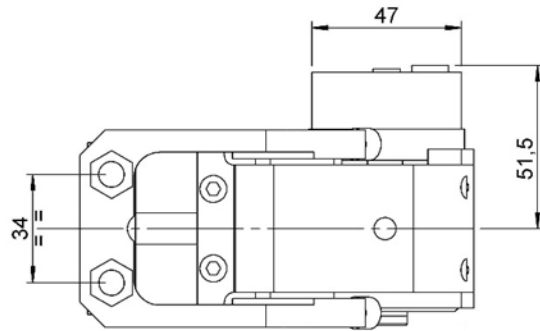
夹爪, D. 40, 夹爪夹臂, 2+2 销子, 固定支架
 Gripper, D. 40, gripper arm, 2+2 pins, fixed support



≠ 固定支架
 ≠ Fixed support

最大打开角度 = 105°.
 Max. opening angle = 105°.

≠ G2 = 不带固定支架 G2/2 = 带固定支架
≠ G2 = without fixed support G2/2 = with fixed support



公差: 定位销孔 ±0.02, 螺纹孔 ±0.1
 #Tolerances: dowel holes ±0.02, screw holes ±0.1

类型 Type	气缸缸径 Cylinder bore	保持力 Holding moment	重量 Weight	工作气压 Working pressure	最大夹紧力矩 (5 bar) Clamping max. torque (5 bar)	空气耗气量 (5 bar) Air consumption (5 bar)
	[mm]	[Nm]	[Kg]	[bar]	[Nm]	[l]
G40.1-G2...	40	200	~ 1,8	2-8	130	~ 0,7

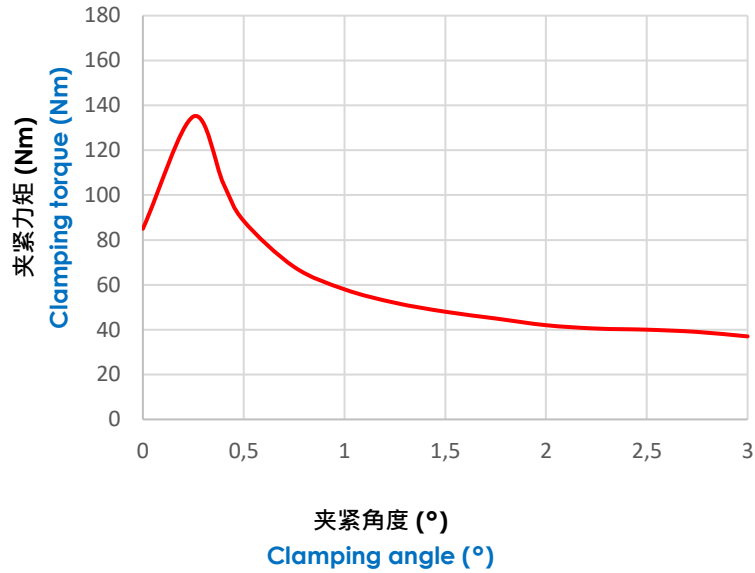


图表.

Diagrams.

夹紧力矩 (Nm).

Clamping torque (Nm).



最大夹紧力矩 (5 bar): **130 Nm.**

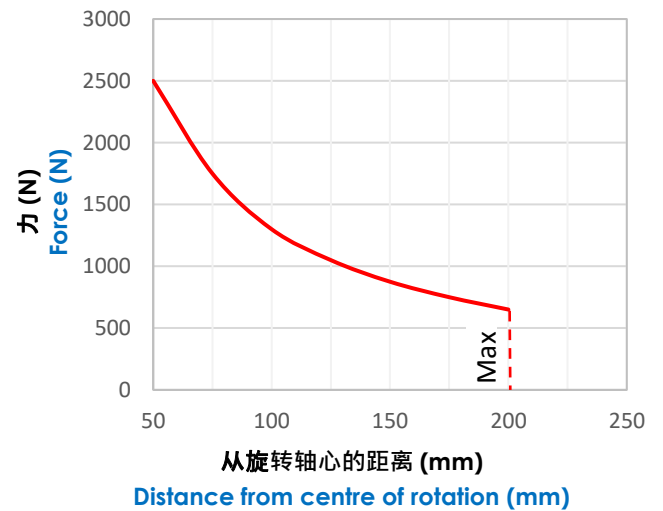
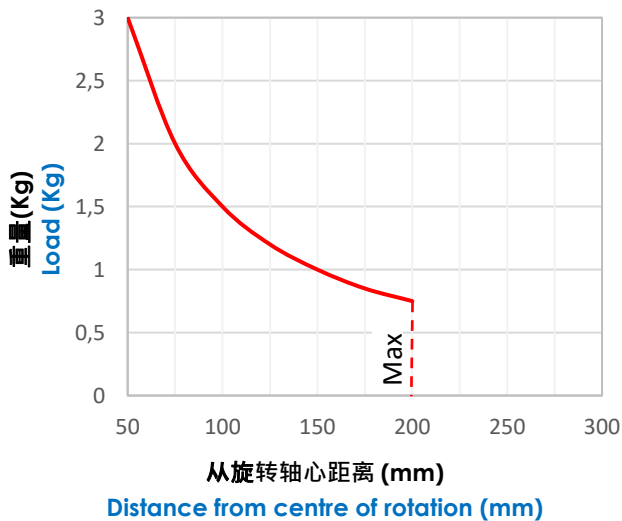
Max. clamping torque (5 bar): **130 Nm.**

最大夹臂负载 (Kg).

Max. load applicable on the arm (Kg).

最大作用力 (N).

Max. force applied (N).



最大重力扭矩 (5 bar): **1,5Nm.**

Max. torque by weight (5 bar): **1,5Nm.**

最大偏心扭矩: **1 Nm**

Max. torque by block-out of axis: **1 Nm**



电感式接近开关图表 (cod. 05830/B/C).

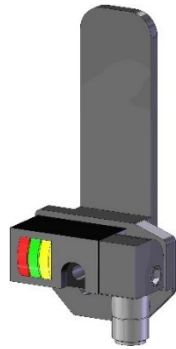
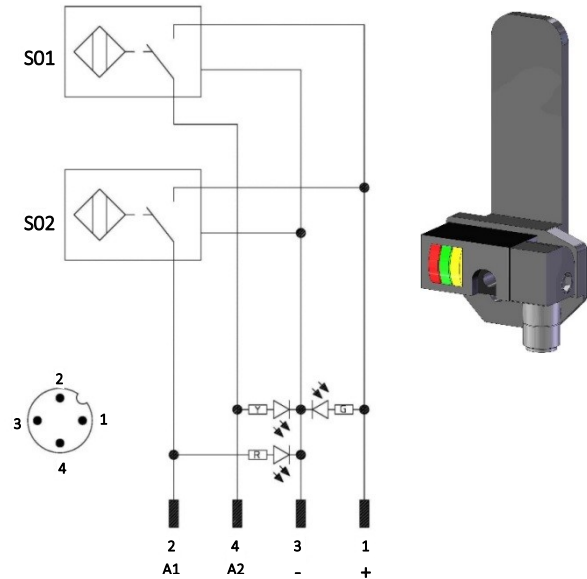
Diagram for Inductive proximity switch (cod. 05830/B/C).

技术数据 (P+F):

- 输出类型: PNP;
- 供电电压: 10-30 VDC;
- 最大换向电流: 200 mA;
- 电源供应: < 20 mA;
- 电压差: < 1,8 V
- 温度范围: -25° / 70° C.

Technical data (P+F):

- Output type: PNP;
- Feeding voltage: 10-30 VDC;
- Max. commutating current: 200 mA;
- Power supply: < 20 mA;
- Voltage drop: < 1,8 V;
- Temperature range: -25° / 70° C.



S01 = 打开信号

S01 = opening signal

S02 = 夹紧信号

S02 = closing signal

Y = 黄色 LED / yellow LED

G = 绿色 LED / green LED

R = 红色 LED / red LED

1 = 棕色线 / brown wire

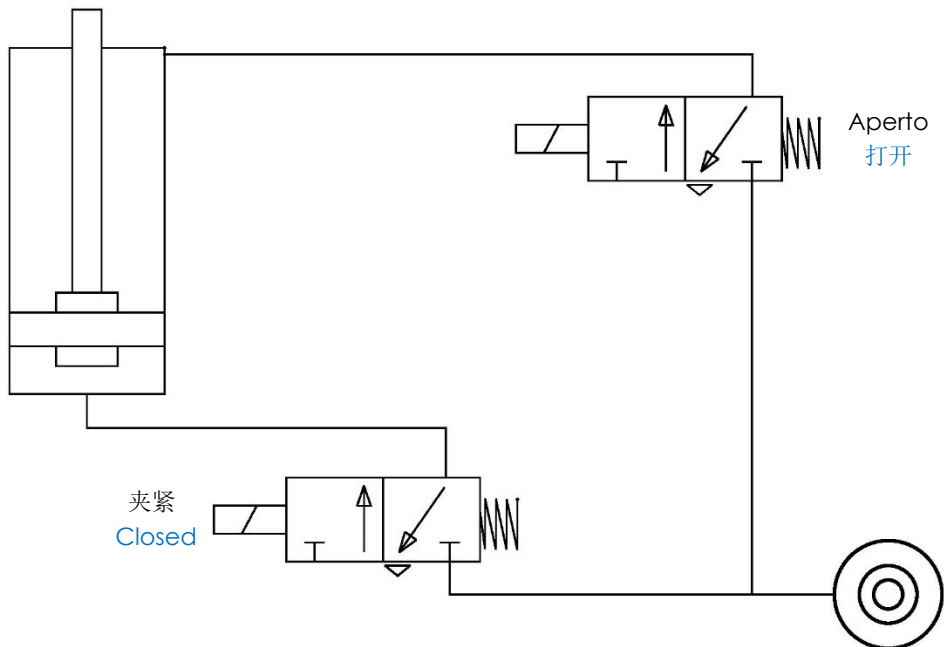
2 = 黑色线 / black wire

3 = 蓝色线 / blue wire

4 = 白色线 / white wire

气路图.

Pneumatic plan.



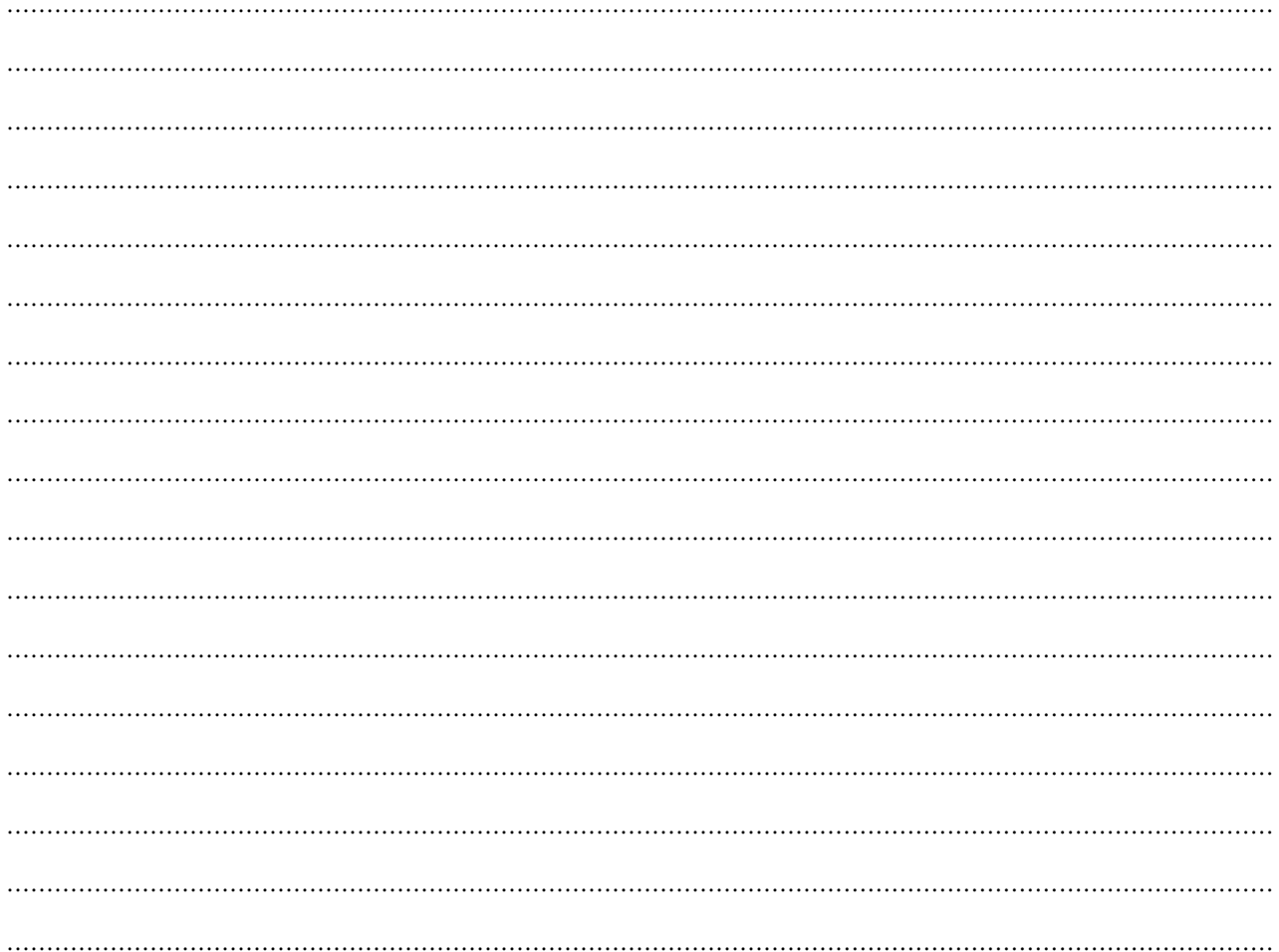
工作气压 Working pressure	空气耗气量 (5 bar) Air consumption (5 bar)
[bar]	[l]
2 - 8	~ 0,7



备件.

Spare parts.

# Kit	图片 Picture	描述 Description	代号 Code
安装夹臂 Arm assembly		夹臂类型 GV 和 GO Arm type GV e GO	05848/C
		夹臂类型 GVS 和 GOD Arm type GVS and GOD	06267/SX/C
		夹臂类型 GVD 和 GOS Arm type GVD and GOS	06267/DX/C
		夹臂类型 G1 Arm type G1	05849/1/C
		夹臂类型 G2 Arm type G2	05849/2/C
固定支架 Fixed support		夹爪类型 G1/1 固定支架 Fixed support for gripper type G1/1	05900/C
		夹爪类型 G2/2 固定支架 Fixed support for gripper type G2/2	05888/C
锁紧销 Lockpins		锁紧销带六角形滚花头 Pin with hexagonal knurled head	3/329/C
		锁紧销带圆头 Pin with rounded head	05534/C
		锁紧销带活动头 Pin with swinging knurled head	3/080/C
接近开关 Proximity switch		P+F 电感式接近开关 Inductive proximity switch P+F	05830/B/C
G40接近开关 Proximity switch G40		电感式接近开关带线配套老款 G40 Inductive proximity switch with cable for old G40 type	05830/C
密封件组件 Seals kit		气缸 G40.1密封件组件 Seal components for pneumatic cylinder G40.1	SCR-CILG40
气缸 Pneumatic cylinder		完整的40 mm 气缸 Complete pneumatic cylinder bore 40 mm	05867/Ang./C
调整垫片 Kit opening angle		G40.1角度调整垫片 Kit opening angle G40.1	07159/Ang./C



这个目录取消并替换了以前的目录。我们保留在没有任何通知的情况下进行添加或更改的权利。产品目录中的产品是标准的;任何特殊申请的查询都由技术/销售部门评估。完整的文档属于VEP自动化s.r.l, 未经许可, 任何形式的复制都是禁止的。

This catalogue cancels and replaces the previous ones. We reserve the right to make additions or changes without any notice. The products in the catalogue are standard; any enquiry of special applications is evaluated by technical/sales department. The complete documentation belongs to VEP Automation S.r.l. and without permission any kind of reproduction is forbidden.

VEP Automation Headquarters

VEP Automation S.r.l
Via San Felice, 37
10092 Beinasco – Torino (Italy)
Tel. +39 011 3972572
Email: info@vepautomation.it
Web: www.vepautomation.it

VEP Automation Germany

VEP Automation GmbH
Fritz Liebsch Str. 29
D 26723 Emden (Germany)
Tel. +49 04921 450758
Email: info@vepautomation.de
Web: www.vepautomation.de

VEP Automation America

VEP Automation S.A. de C.V.
Av. Toluca 373 - 3A Col. Olivar de los
Padres Del. Álvaro Obregón
01780 CDMX – (Ciudad de México)
Tel. +52 55 8582 8025
Email: info@vepautomation.mx
Web: www.vepautomation.mx

VEP Automation China

柯莱普自动化科技有限公司
苏州柯莱普自动化科技有限公司
地址: 中国江苏省苏州市吴中区友新路 168 号
张玲大厦 2 幢 333 室
Tel.: +86 0512 65753608
Email: info@vepautomation.cn
Web: www.vepautomation.cn